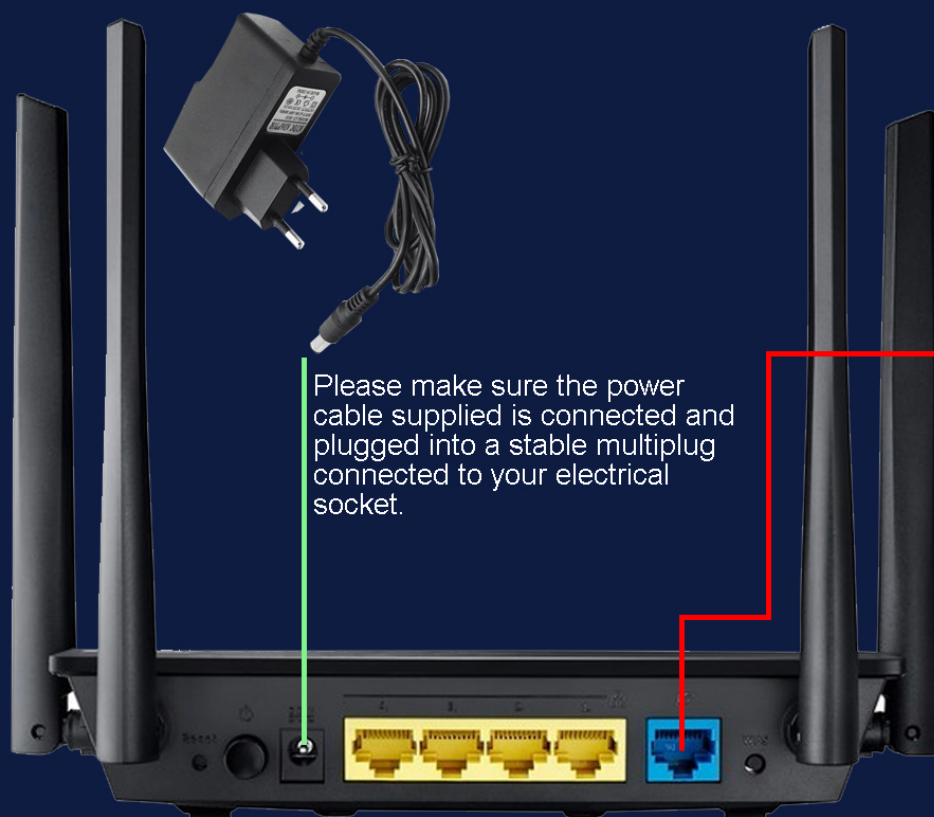


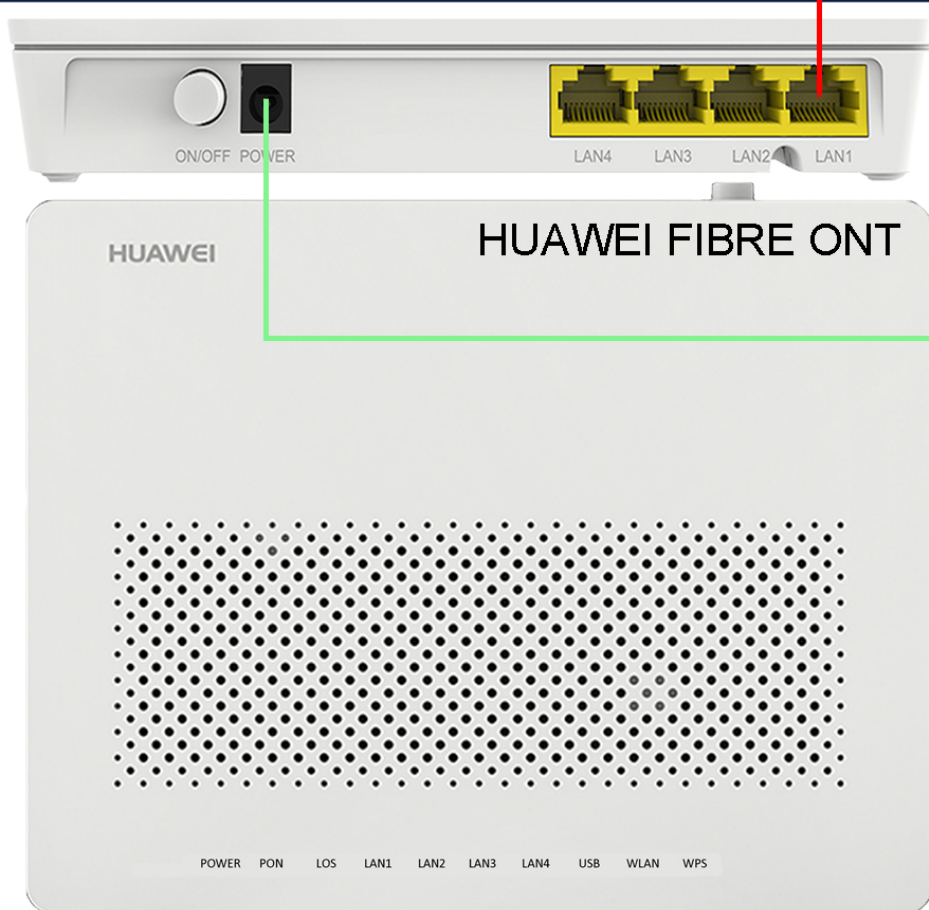
## CONNECTING YOUR ROUTER TO THE FIBRE ONT



ASUS RT-AC58U  
FREE TO USE ROUTER

Please make sure the power cable supplied is connected and plugged into a stable multiplug connected to your electrical socket.

Please make sure the ethernet cable that came in the free to use router box is connected to the free to use Yutiliti Router as seen below. One end of the Blue ethernet cable is to be connected to the router into the WAN/INTERNET (Blue Port)



HUAWEI FIBRE ONT

Please make sure the ethernet cable that came in the free to use router box is connected to the ONT (White fibre box the team will install in the property). This end to be connected into the LAN 1 port on the ONT, (Furthest Yellow Port from where the power cable plugs into this device)

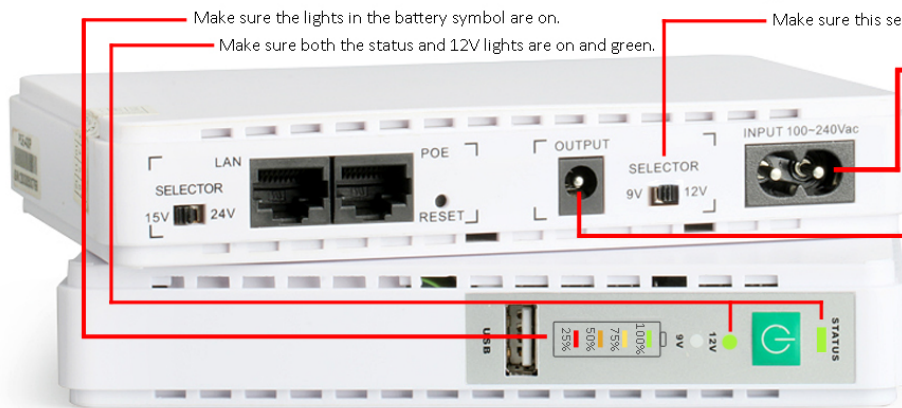
Please make sure the power cable supplied is connected and plugged into a stable multi-plug connected to your electrical socket.



If connected correctly you will see POWER light green and stable, PON light green and stable, LAN1 green and flickering.

# CONNECTING UPS DEVICE

- Step 1: Make sure the UPS is on (Battery Symbol lights on)  
Step 1a: Make sure Status and 12V Lights are on and green.
- Step 2: Connect Splitter Cable single side to UPS
- Step 3: Connect Splitter Cable Double Side 1 to the ONT
- Step 4: Connect Splitter Cable Double Side 2 to the extension cable
- Step 5: Connect Extension Cable to Router
- Step 6: Make Sure ONT is powered on
- Step 7: Make Sure the Router is on
- Step 8: Make Sure selector is set to 12V

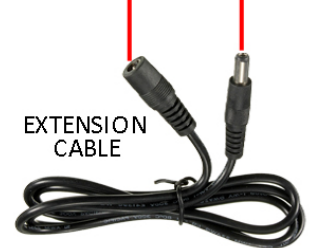


Make sure the power cable is connected and plugged into electrical socket.

Make sure the power button is pressed in and lights are on the ONT (White Huawei box the fibre team installed)



SPLITTER CABLE



EXTENSION CABLE

Make sure the lights in the battery symbol are on.

Make sure both the status and 12V lights are on and green.

Make sure this selector is on 12V